

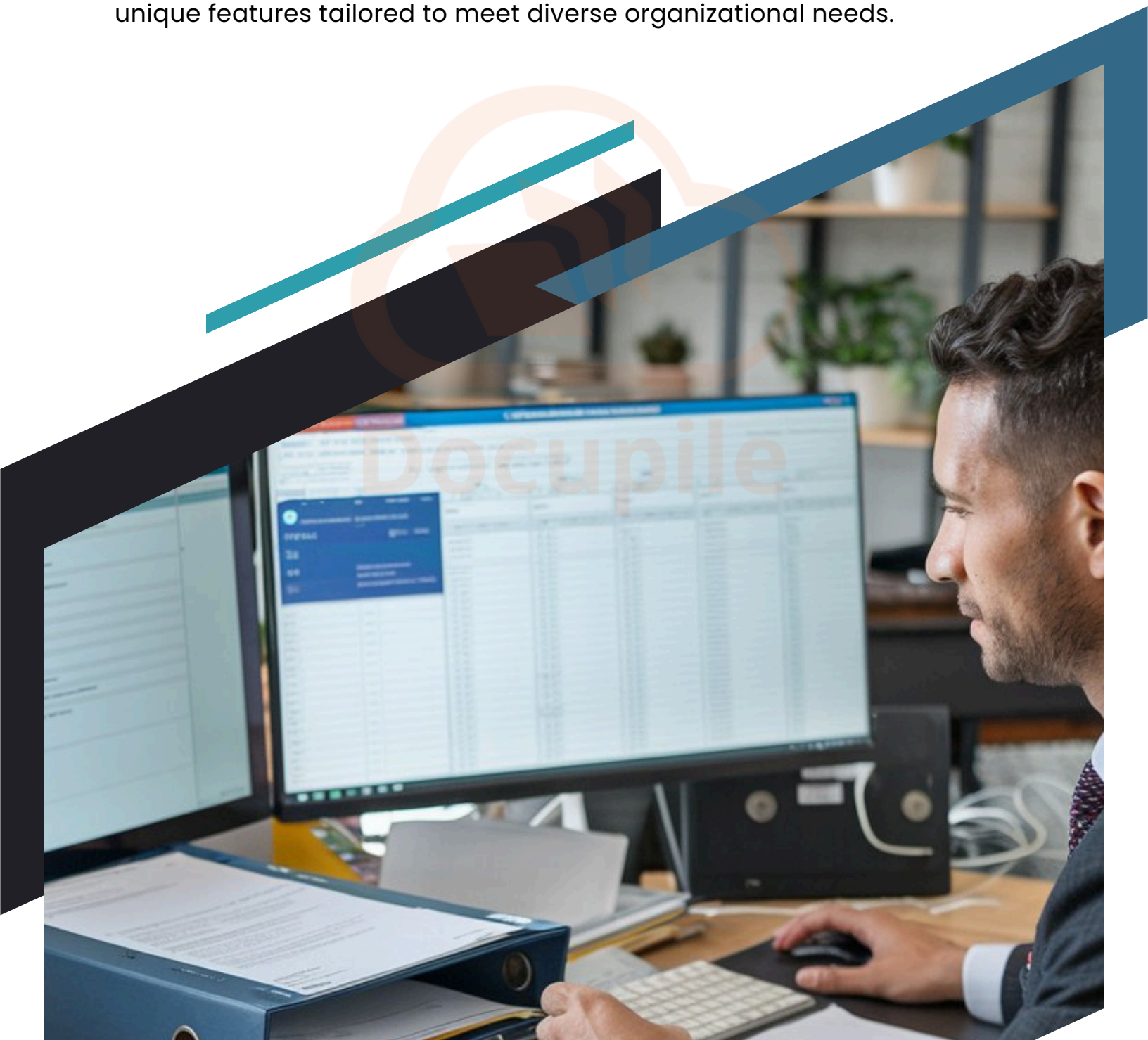
Docupile VS EisenVault

A Comprehensive Comparison



Overview

Docupile and **EisenVault** are prominent Document Management Systems (DMS) designed to streamline document storage, retrieval, and management for businesses across various industries. Both platforms offer cloud-based solutions with unique features tailored to meet diverse organizational needs.



Use Cases:

Challenges and Docupile's Approach

- **Healthcare**



- **Challenge**

Managing sensitive patient data while complying with strict healthcare regulations.

- **Docupile's Approach:**

Provides encrypted cloud storage, automated compliance monitoring, and integrated physical file tracking for a unified document system.

- **Financial Services**



- **Challenge**

Ensuring secure storage and management of sensitive client financial data while meeting regulatory compliance.

- **Docupile's Approach:**

Offers 256-bit encryption, automated retention schedules, and compliance tracking to ensure security and readiness for audits.

- **Education**



- **Challenge**

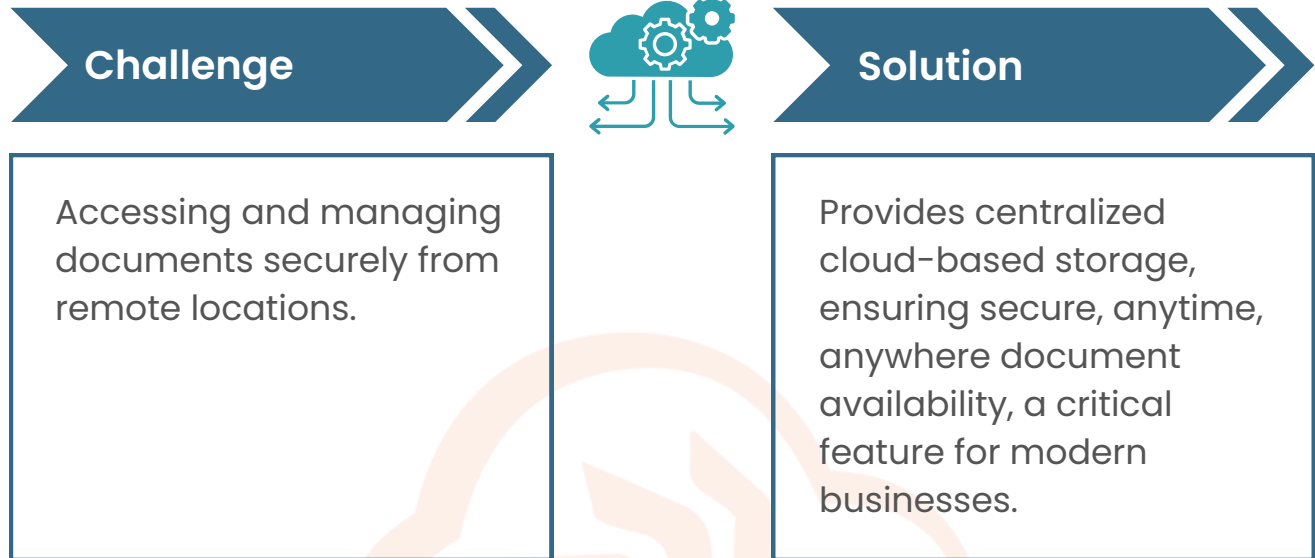
Managing administrative records for students and staff while ensuring accessibility and security.

- **Docupile's Approach:**

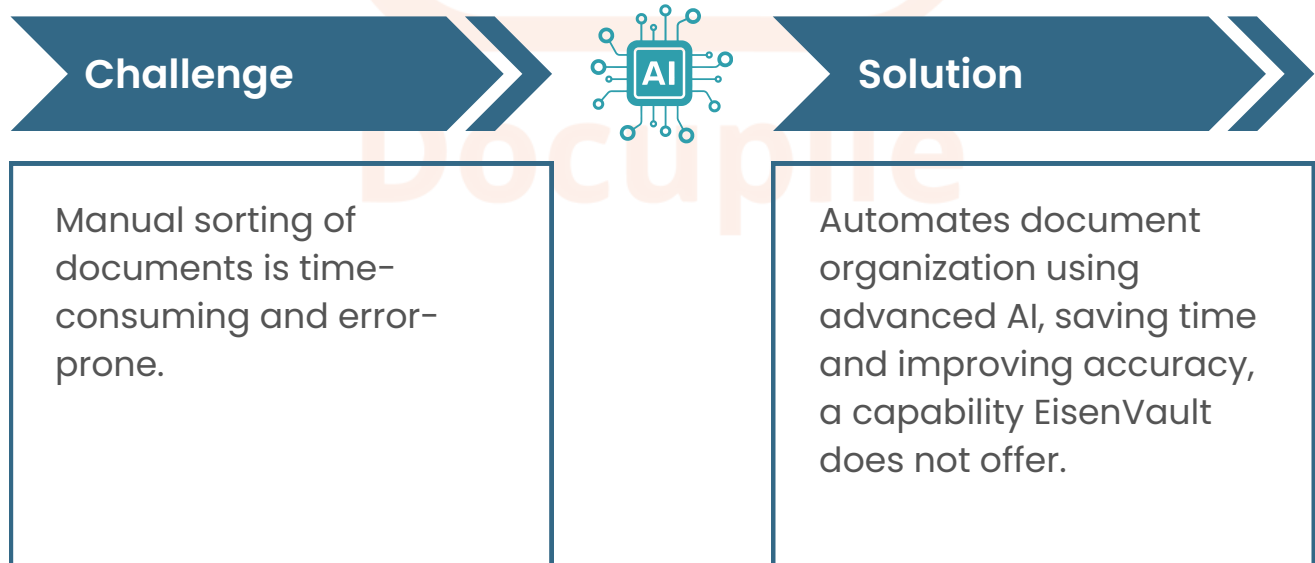
Centralized cloud-based storage with robust search features and physical record tracking for a complete administrative solution.

Key Features of Docupile

- **Cloud-Based Storage**



- **AI-Powered Sorting**



Key Features of Docupile

- **Compliance Monitoring**

Challenge

Ensuring adherence to industry regulations and avoiding compliance penalties.



Solution

Tracks compliance with standards like SOC-2 and HIPAA, offering automated monitoring to ensure readiness for audits and inspections.

- **E-Signature Integration**

Challenge

Delays in approvals due to manual signature processes.



Solution

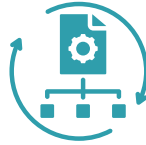
Enables seamless e-signature integration for faster approvals and improved workflow efficiency.

Key Features of Docupile

- **Workflow Automation**

Challenge

Inefficient processes due to manual routing of documents and tasks.



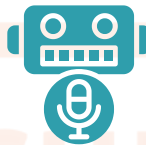
Solution

Streamlines workflows by automating document routing and task assignments, reducing delays and enhancing productivity.

- **Bot Recognition**

Challenge

Maintaining high-level security from automated bots and unauthorized processes.



Solution

Prevents unauthorized access through integrated CAPTCHA features, a security enhancement not available in EisenVault.

Challenge, Solution, and Impact

Challenge:

- Managing and organizing both digital and physical documents efficiently remains a significant hurdle for organizations.
- Ensuring compliance with industry-specific regulations and protecting sensitive data from unauthorized access.
- Limited automation capabilities in traditional systems result in time-consuming manual processes and potential errors.

Solution:

- Docupile integrates **AI-powered sorting** to automate organization, saving time and reducing errors.
- Provides **comprehensive compliance monitoring** to ensure adherence to standards like SOC-2 and HIPAA.
- Includes **bot recognition and CAPTCHA** to prevent unauthorized system access, ensuring document security.
- Unifies physical and digital document management, offering seamless tracking for both.

Challenge, Solution, and Impact

Impact:

- **Increased Efficiency:** Automating document organization and workflows reduces manual tasks and improves team productivity.
- **Enhanced Security:** Advanced security measures, like bot recognition, protect sensitive data, reducing risks of breaches.
- **Compliance Readiness:** Automated compliance tracking ensures organizations are always audit-ready, avoiding penalties.
- **Streamlined Operations:** Integration of physical and digital document management creates a unified, seamless workflow, saving costs and time.



Docupile vs. EisenVault:

Feature Comparison

Feature	Docupile	EisenVault
Cloud-Based Document Storage	✓ Provides centralized cloud storage accessible from anywhere, ensuring documents are available anytime.	✓ Utilizes top-tier public cloud providers like AWS, Azure, and Google Cloud for high availability and security.
AI-Powered Auto Sorting	✓ Features AI-driven automatic sorting of documents based on content or predefined rules, enhancing organization and efficiency.	✗ Does not offer AI-based auto-sorting capabilities.
E-Signature Integration	✓ Integrates e-signature tools for seamless document approvals and legal compliance.	✓ Supports digital signatures, including integration with eMudhra for secure document signing.
Security & Compliance	✓ Ensures data security with 256-bit encryption and compliance with standards like SOC-2 and HIPAA.	✓ Offers robust security measures, including encryption and access controls, to protect sensitive information.

Docupile vs. EisenVault:

Feature Comparison

Feature	Docupile	EisenVault
Integration with DMS Systems	✓ Provides integration with various industry-specific systems, including Dealer Management Systems.	✓ Offers integration options with existing systems to enhance workflow efficiency.
Document Scanning & OCR	✓ Includes OCR capabilities for extracting data from scanned documents, facilitating easy search and retrieval.	✓ Provides document digitization services with OCR to convert physical documents into searchable digital formats.
Workflow Automation	✓ Offers automated workflows for document routing, approvals, and task management to streamline business processes.	✓ Includes workflow management features to automate repetitive tasks and improve efficiency.
Mobile Access	✓ Provides mobile access through web browsers, allowing users to manage documents on the go.	✓ Offers native mobile apps for Android and iOS, enabling document access and management from mobile devices.

Docupile vs. EisenVault:

Feature Comparison

Feature	Docupile	EisenVault
Physical Document Management	✓ Offers comprehensive physical file tracking and management services for integrating physical and digital records seamlessly.	✓ Provides comprehensive physical file tracking and management services.
Bot Recognition & CAPTCHA	✓ Prevents unauthorized bot access to enhance security and ensure authorized access.	✗ Does not include bot recognition or CAPTCHA features.
Document Lifecycle Management	✓ Manages documents through their entire lifecycle—from creation to disposal—ensuring compliance and efficiency.	✓ Provides document lifecycle management features to oversee documents from creation to archiving.
Metadata Management	✓ Allows customization and management of metadata for documents, enhancing searchability and organization.	✗ Supports minor metadata management to improve document categorization and retrieval.

Docupile vs. EisenVault:

Feature Comparison

Feature	Docupile	EisenVault
Advanced Search Functionality	✓ Provides full-text search capabilities, allowing users to quickly locate documents using keywords and metadata.	✓ Offers search functionalities to retrieve documents based on metadata and content.
Version Control	✓ Maintains a history of document versions, enabling users to track changes and revert to previous versions if necessary.	✓ Provides version control features to manage document revisions and history.
Audit Trail and History	✓ Keeps a detailed record of all document activities, ensuring transparency and accountability.	✓ Maintains audit trails to monitor document access and modifications.

Docupile vs. EisenVault:

Feature Comparison

Feature	Docupile	EisenVault
User Access Management	✓ Allows administrators to define user roles and permissions, ensuring appropriate access levels to documents.	✓ Provides user access controls to manage permissions and document security.
Document Profiling and Tagging	✓ Enables users to add metadata and tags to documents, facilitating organized storage and easy retrieval.	✓ Supports document tagging and metadata assignment for efficient organization.


Docupile



Ready to see it in action?

Schedule your demo today! [Scan Here](#)

 4522 Schlipf Rd, Katy, TX, 77493

 call: (281) 942-4545

 contact@docupile.com

 www.docupile.com

